

**Halton Hills Model Flying Club  
Alloo Public School  
Indoor Rules 2024**

*Halton Hills Model Flying Club have been given permission to conduct MAAC modelling activities indoors and fully understand and agree any permission granted applies to indoor activities **only** – no exceptions*

**Administrative**

Club: Halton Hills Model Flying Club (424, Zone L)

Location: Alloo Public School  
12287 Mississauga Rd, Caledon, ON L7C 1X2, at their gym facility.  
(43.702315, -79.873701)

Site owner: Peel District School Board

Contacts: President:	Peter Scott 905-703-0395
Vice-President:	Glen Higgs 416-881-0215
Secretary Treasurer:	Bernie Skikavich 905-876-5657
Safety Officer:	Daren Murdoch 647-271-0124
Field Officer:	Dan Tanton 647-544-0574

Dates: Recurring evening event October to May each year. Specific dates / times are arranged in advance with the Peel District School Board.

Dates and times for 2024-25 are:

- Friday 22 Nov 2024 8:00 pm - 10:00 pm
- Friday 13 Dec 2024 8:00 pm - 10:00 pm
- Friday 18 Jan 2025 8:00 pm - 10:00 pm
- Friday 21 Feb 2025 8:00 pm - 10:00 pm
- Friday 23 Mar 2025 8:00 pm - 10:00 pm
- Friday 12 Apr 2025 8:00 pm - 10:00 pm

Conditions for use - All persons using this modelling site must:

1. be MAAC members in good standing.
2. be members of the Halton Hills Model Flying Club, or an invited guest of Halton Hills Model Flying Club, and
3. agree to follow the MAAC Safety code and all other site rules.

These rules or requirements can be found posted at the entryway.

Peel District School Board rules pertaining to facility use must be followed.

Outdoor footwear must be removed upon entering the school, and must remain just inside the school entry. Non-marking shoes must be worn on gymnasium floors. The use of regular street shoes, hard soled shoes, protective coverings or cleats inside the gym is not permitted.

The Club executive will review these rules at least once a year.

In the event of an emergency, phone (9-11 or number) and the civic address for first responder is:

12287 Mississauga Rd, Caledon, ON L7C 1X2, at their gym facility.

### **Normal operating procedures and Site safety rules**

1. A Safety Officer will be designated to manage flying activities.
2. The number and type of models flown together will be at the discretion of the designated safety officer.

This site allows the following modeling categories: mRPAS, RPAS, Free Flight

- Maximum helicopter rotor diameter 15 inches (38 cms).
- Maximum wingspan of fixed wing models or multi-rotor models – 20 inches (51 cms).
- Maximum wingspan of ultra-light, indoor, fixed wing models over 20 inches (51 cms) but less than 39 inches (99 cms) may be flown at the discretion of the designated safety officer.

The available space is defined as follows:

- the pit / pilot / bystander/spectator area on is south side of the gym, between the wall and the edge of the basketball court area.
  - the Flight Line is the south border of the gym basketball area.
  - the flight line/operations area is the gym area north of the pit / pilot / bystander/spectator area.
3. The person in charge at the event may, at their sole discretion, immediately ground any aircraft deemed too large or too fast to fly safely within our limited indoor space with consideration of other flyers.
  4. The person in charge at the event may, at their sole discretion, suspend indoor flying privileges of a flyer for any action considered to be detrimental to the safety of others.

For members operating mRPAS/RPAS at this site:

1. Only electric power, rubber power or non-powered aircraft are permitted.
2. All pre-flight inspections or assembly shall be done in the designated area.

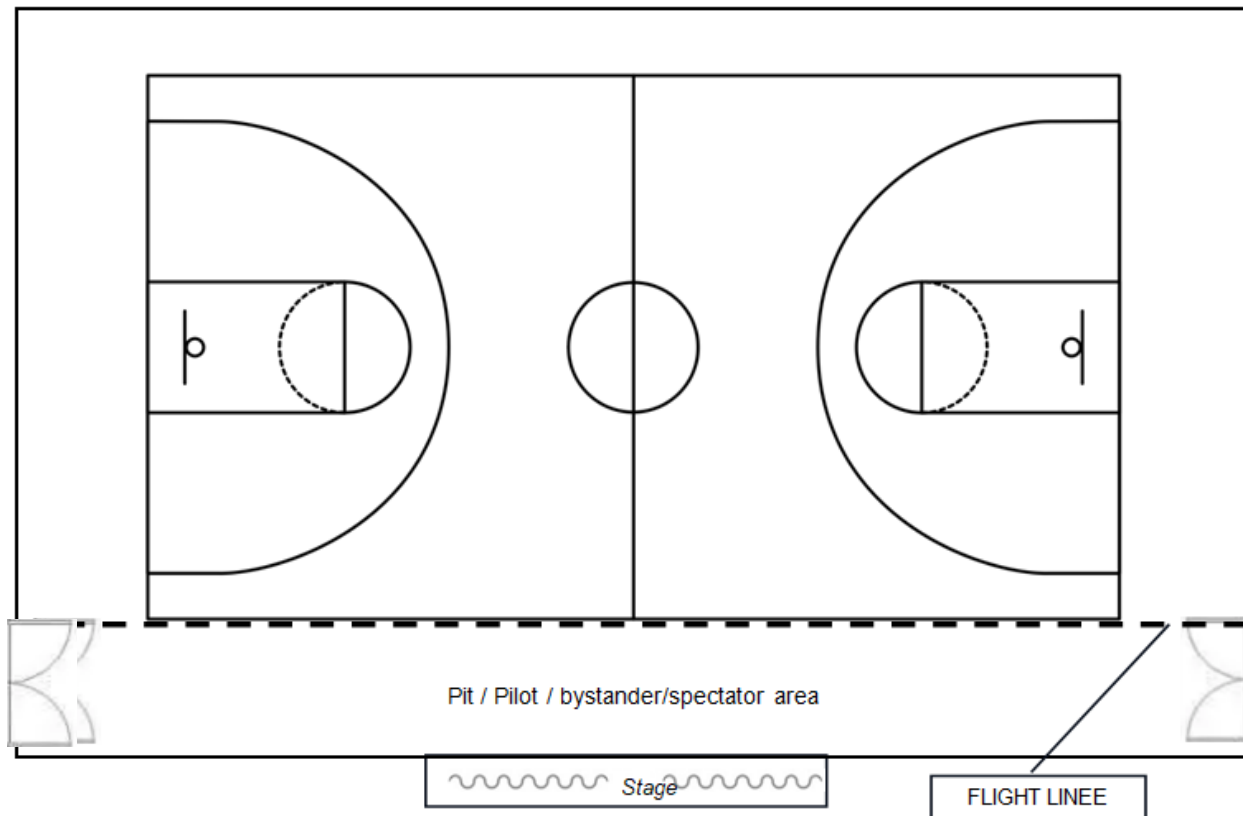
3. Batteries shall not be connected to electric powered models unless the model is restrained in the start-up area, or the propulsion system deactivated/de-armed or otherwise inoperative – no exceptions.
4. The Safety Officer will establish a flight line. The direction of modeling/take-off landing, and traffic pattern will be determined by site safety officer.
5. Hand launching shall be done in agreement with any pilots flying – normally off to one side of the pilot stations.
6. Recovery of RPA that land/crash in the modelling/flying area will be done in agreement with all other modellers/pilots flying. Do not fly/operate a model directly over/near other persons recovering a model.
7. MAAC “spotters” are optional at our site. The following are site procedures for ensuring bystander safety:
  - a. When indoor flying activities are happening bystanders/spectators shall remain close to the outside wall of the south side of the gym, and behind the flying pilots.
  - b. When any member or other person spots a bystander that might come into the modeling area unsafely, they are to yell out “BYSTANDER” in a loud voice.
  - c. ALL modellers must immediately stop modeling activities in that area and if possible, land/return to the pit area as soon as safely able.
  - d. When the bystander’s safety is no longer a threat, the person who gave the warning shall yell “ALL CLEAR”, or the modelers/pilots may make that determination themselves, and resume modeling/flying.

### **Emergency or safety procedures**

8. If there is any type of near miss or safety concern between a model and a bystander, ALL modelling SHALL cease immediately. The members involved should fill out a MAAC reportable occurrence report and submit that to MAAC and the club/site/event organizer and follow MAAC policy with the following exceptions:
  - a. If the member(s) involved believe the risk was very minimal, they may complete their own self declaration or risk assessment using the MAAC form, and resume modelling.
  - b. If the member or Club/site/event organizer deems the event serious, modelling will not resume until members are given permission by the club/site/event organizer – in writing.
  - c. If there is actual contact between a model and a bystander – all modelling will cease until MAAC confirms we may resume operations.
  - d. This process is for your protection.
9. Emergency procedures such as exit locations, emergency equipment location (defibrillator, fire extinguishers etc.) are as posted in the school’s main lobby area
10. There are no other risk mitigating strategies required at Halton Hills Model Flying Club/Alloo Public School indoor modelling site.

## Modelling Site Layout Diagram

Alloo Public School Gym



The pit / pilot / bystander/spectator area are on the south side of the gym accessible from the west doors on that side.

Pilot stations are just inside the flight line, out from the wall to allow for a pit area, and for people to move behind the stations without going in front of the pilots.